



# EXPLORING EARLY HUMANS

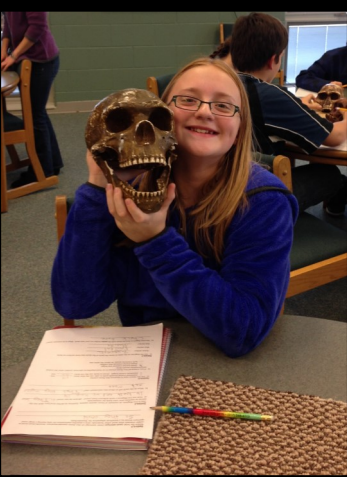
LEARN ABOUT YOUR ANCESTORS WITH MICHIGAN STATE UNIVERSITY!!!

## Human Origins & Anthropology



“The MSU Museum and the Department of Anthropology provide a thoroughly engaging, hands-on program that truly brings to life our “Early Humans” curriculum. The experience is consistently regarded as one of the highlights of middle school by our young social scientists!”

—6th grade Social Studies teacher



### What *makes us different* from our ancestors? How can we study *early humans*?

The Michigan State University Museum and Department of Anthropology have teamed up to provide a hands-on program for **middle school students** to learn about anthropology and human evolution! MSU student ambassadors will come to your school and lead the class in hands-on activities and mini-lessons using casts of real fossil hominins. The program supports social studies and science curricula and offers a teamwork-based approach to making science and anthropology fun!

There are five slots currently available for the 2017—2018 school year. Please contact Julie Fick, MSU Museum’s Science Education Specialist, for scheduling details.

**MAKE A RESERVATION FOR FALL 2017!**

## INTERESTED?



(517) 355 - 2372



[jfick@msu.edu](mailto:jfick@msu.edu)



[@MSUMuseum](https://twitter.com/MSUMuseum)



[Michigan State University Museum](https://www.facebook.com/MSUMuseum)

